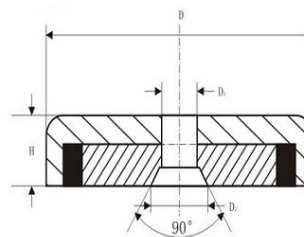


NdFeB shallow pot magnets, with countersink, nickel plated

Product No.	D ϕ	D 1 ϕ	D 2 ϕ	H	Max Pull (kg)	Weight (g)
NP-A16	16	3.5	6.5	5	5	7
NP-A20	20	4.5	8.6	7	6	13
NP-A25	25	5.5	10.5	8	14	23
NP-A32	32	5.5	10.5	8	25	39
NP-A36	36	6.5	12	9	29	52
NP-A42	42	6.5	12	9	37	76
NP-A48	48	8.5	16	11.5	68	120
NP-A60	50	8.5	16	15	112	252
NP-A75	75	10.5	19	18	162	488

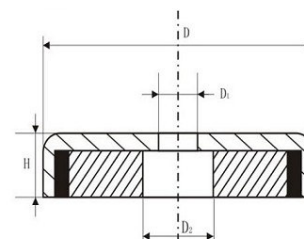
All above dimensions are in (mm)



NdFeB shallow pot magnets, nickel plated

Product No.	D ϕ	D 1 ϕ	D 2 ϕ	H	Max Pull (kg)	Weight (g)
NP-B16	16	3.5	6.5	5	4	6
NP-B20	20	4.5	8	7	6	12
NP-B25	25	5.5	9	8	14	23
NP-B32	32	5.5	9	8	23	36
NP-B36	36	6.5	11	9	29	50
NP-B42	42	6.5	11	9	32	73
NP-B48	48	8.5	15	11.5	63	114
NP-B60	50	8.5	15	15	95	240
NP-B75	75	10.5	18	18	155	471

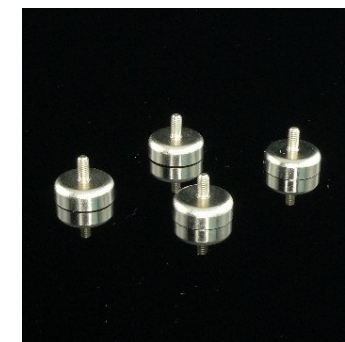
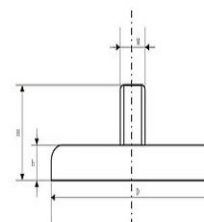
All above dimensions are in (mm)



NdFeB shallow pot magnet, with threaded bush, nickel plated

Product No.	D φ	M	H	h	Max Pull (kg)	Weight (g)
NP-C10	10	3	12	5	2.2	3.5
NP-C12	12	3	13	5	3.2	5
NP-C16	16	4	13	5	5.5	7.5
NP-C20	20	4	15	7	9	16
NP-C25	25	5	17	8	22	30
NP-C32	32	6	18	8	34	45
NP-C36	36	6	18	8	41	57
NP-C42	42	8	20	9	68	84
NP-C48	48	8	24	11.5	81	130
NP-C60	60	8	30	15	113	254
NP-C75	75	10	34	15	164	550

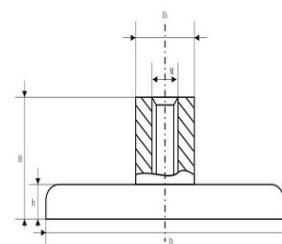
All above dimensions are in (mm)



NdFeB shallow pot magnet, with threaded bush, nickel plated

Product No.	D φ	M	H	h	Max Pull (kg)	Weight (g)
NP-D10	10	5.5	12	5	2.2	4
NP-D12	12	6	13	5	3.2	5.5
NP-D16	16	6	13	5	5.5	8
NP-D20	20	8	15	7	9	17
NP-D25	25	10	17	8	22	32
NP-D32	32	10	18	8	34	47
NP-D36	36	10	18	8	41	59
NP-D42	42	12	20	9	68	87
NP-D48	48	12	24	11.5	81	132
NP-D60	60	14	30	15	113	270
NP-D75	75	16	34	15	164	552

All above dimensions are in (mm)



NdFeB shallow pot magnet, with hook, nickel plated

Product No.	D	M	H	h	Max Pull (kg)	Weight (g)
NP-E16	16	4	14	5	5.5	11
NP-E20	20	4	14	7	9	21
NP-E25	25	5	15	8	22	37
NP-E32	32	6	16	8	34	56
NP-E36	36	6	16	8	41	68
NP-E42	42	6	16	9	68	97
NP-E48	48	8	23	11.5	81	154
NP-E60	60	8	23	15	113	282
NP-E75	75	10	25	18	164	560

All above dimensions are in (mm)

